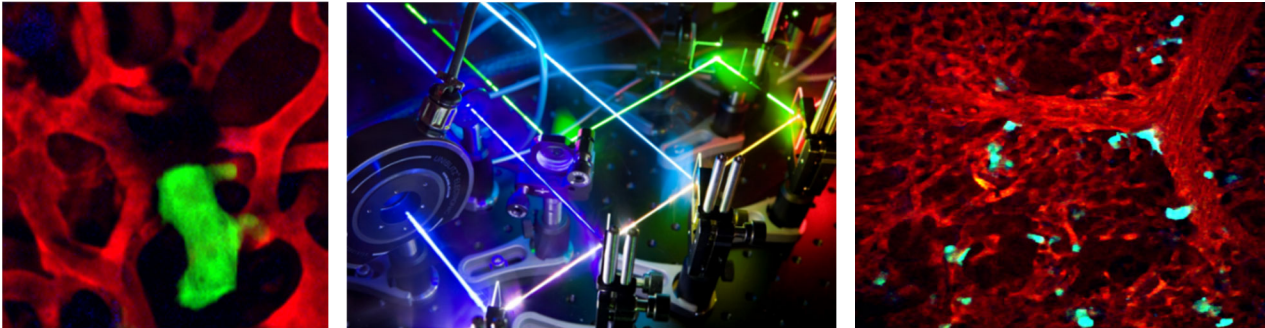


**Gruss Lipper Biophotonics Center  
Integrated Imaging Program**



**Position Summary:**

We are searching for a creative, independent, and energetic person for a non-tenure track faculty position to work in the Gruss Lipper Biophotonics Center and its Integrated Imaging Program under the supervision of Drs. John Condeelis and David Entenberg at Einstein College of Medicine in New York City.

The candidate will work within the advanced imaging core of a newly funded program project group focused on studying the mechanisms of breast cancer metastasis to the lung. The candidate will become an expert in advanced imaging techniques and aid a multidisciplinary team of physicists, cell and cancer biologists, and physician scientists in utilizing them. Techniques include multiphoton microscopy in live animals, surgical implantation of optical imaging windows, correlative microscopy, and quantitative digital pathology. As this is a unique multidisciplinary position that combines biomedical engineering, microscopy & image analysis, and experience with animal models of cancer, we are looking for a candidate who will bring significant skills in one or two areas and a desire to learn the others.

**Minimum Education and Experience:**

Applicants must have an M.Sc. or Ph.D. in a relevant field (e.g. cancer biology, biomedical engineering, etc.); 2) have experience in animal handling, microscopy, some image analysis programming; and 3) be willing to work with live mice.

**Special Instructions:**

To apply, applicants must submit: 1) A cover letter describing the applicant's interest in the position, 2) A curriculum vitae, and 3) Three letters of reference. Email applications with the subject "GLBC Core Application" to David Entenberg ([david.entenberg@einsteinmed.org](mailto:david.entenberg@einsteinmed.org)). Applications must be complete (with items 1-3 above) in order to be reviewed.

Starting salary is competitive and depends on experience at time of arrival.

**Employer Name:** Albert Einstein College of Medicine. Einstein is an equal opportunity employer.